

AUSTRALIA'S PREMIUM

COLORBOND VAN BODIES

Safe protection from moisture and contamination

Internal steel frame construction

Flush rear under-run bar with dock rubbers

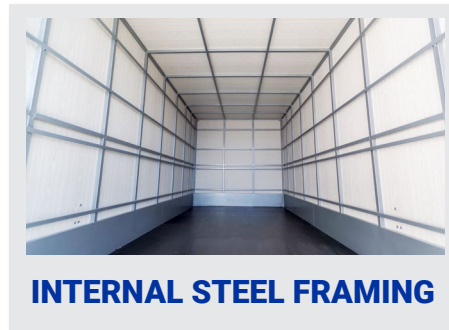


Colorbond Vans provide an enclosed structure where freight can be stored and transported. The bodies are constructed using Colorbond walls and an aluminium roof sheet. The enclosed body is particularly useful for transporting items that must be protected by external conditions.

ALLTRUCK BODIES



NOSECONE



INTERNAL STEEL FRAMING



SIDE DOOR

WHERE QUALITY IS NEVER COMPROMISED

AUSTRALIA'S PREMIUM COLORBOND VAN BODIES

Colorbond Vans provide an enclosed structure where freight can be stored and transported. The bodies are constructed using Colorbond walls and an aluminium roof sheet. The enclosed body is particularly useful for transporting items that must be protected by external conditions.



WARRANTY

- 24 months structural warranty.
- 12 months on all componentry, faulty materials and poor workmanship.
- Normal wear and tear excluded.
- Support available in all states.

COLORBOND VAN BODIES

DESCRIPTION
• Steel framed van body with RHS framed front wall which meets Load Restraint Guide requirements and 3mm ply lining between frame and flat white Colorbond® exterior
• External aluminium top and bottom rub rails
• Steel roof frame, with 3mm ply lining and one-piece aluminium roof sheet
• 3mm steel chequer plate OR 17mm Hypergrip timber panel flooring
• 150mm high steel kick panels around bottom of walls
• Three (3) rectangular steel tube tie rails on each wall and two (2) in roof
• LED work light fitted in rear corner
• Double rear FRP doors with three hinges, seals and one camlock per door
• Fixed safety grab handles on rear pillars
• Flush rear under-run bar with dock rubbers
• LED lights for all statutory side, front, rear outline marker light and licence plate lights
• All compulsory mudguards, mudflaps, reflectors, and marker plates to suit registration requirements in State of intended operation

OPTIONS
Corporate signage on separate quote – please contact us
Rear-vision camera system with safety audio system
Side under-run protection system
Sloping front with aluminium chequer plate cover panel
100mm x 100mm aluminium angle on top sides & front corners, plus polished bottom rail extrusions
Fibreglass NoseCone® or Sideburns® to suit
Side door with camlock or flush lock, non-slip step and pivoting safety handle
Twin camlocks on each rear door
Aluminium side or rear roller door
19mm tongue & groove hardwood flooring
5mm steel chequer plate floor to suit pallet jacks
Toddco® or Whiting panel type rear door
Full width furniture tailboard with spring and HD chains and mating plate
Full width 150mm deep chequer plate rear step
Pull-out walk-up board, stored under floor
Load-loc track on each side wall, and spring loaded shoring bars
Dressed timber or carpet covered battens all around
Extra LED side marker lights, or LED mid-body indicator lights
High mount LED repeater stop/tail/indicator lights at rear
Aluminium chequer plate mudguards, or polished stainless steel flat style mudguards
Steel toolbox 900 x 450 x 450mm with inset lock
Toolbox with aluminium chequer plate lid, or with polished stainless steel lid
Range of tilting, retractable or Tuckaway tailgates
Appropriate certification for all state registration requirements

LET'S TALK - CONTACT US TODAY