

# SB10A 21'-0" (10 PALLET) CURTAINSIDER



**STOCK UNIT  
READY TO GO**

## SPECIFICATIONS:

Size:	6400mm Long x 2490mm Wide x 2440mm High from top of coaming <b>(to suit 820-850 wide chassis rails)</b>
Side Opening:	2265mm
Front Wall:	75mm front wall meeting all load restraint requirements fitted with front tensioners.
Rear Frame:	Channel uprights reinforced with 50 x 50 SHS for added strength with dock rubbers and underrun bar.
Roof Frame:	RHS roof frame with 30 x 30 SHS roof bows and aluminium curtain tracks.
Floor Frame:	100 x 50 channel main runners with 75 x 50 RHS cross bearers.
Flooring:	<b>3mm</b> chequered plate floor.
Side Coaming:	100 x 45 RSJ with 20mm lip.
Rope Rails:	25mm NB pipe.
Steps:	Front & rear steps on each side.
Rear Doors:	Double FRP rear doors, single camlock, and three (3) hinges on each door.
Guards:	Steel mudguards & mudflaps.
Lights:	Three (3) side marker lights on each side, front & rear clearance lights.
Curtains:	Easy glide roller Blue 543 curtains with black pelmet.
Gates:	Three (3) 1500H lightweight duragal steel gates on each side

Price:

Optional Extras (pricing on request):

- Load rated curtains
- Reverse camera
- Aluminium gates
- Gate restraint system
- Nose cone
- Tool box
- Load binders
- Work light
- Alternative curtain colour:



Model RO2  
DOUBLE RATCHET

TENSIONERS



NARVA LED LIGHTS



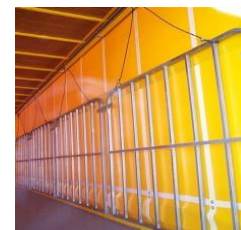
NARVA LED NUMBER  
PLATE LIGHTS



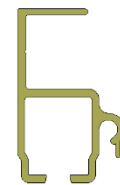
NOSE CONE



LOAD BINDERS



GATES RESTRAINT SYSTEM



CURTAIN TRACK



TOOLBOX



245 FRANKSTON-DANDENONG ROAD, DANDENONG, 3175  
TEL: 03 97912144

# SB10B 21'-0" (10 PALLET) CURTAINSIDER

**STOCK UNIT  
READY TO GO**



## SPECIFICATIONS:

Size:	6400mm Long x 2490mm Wide x 2440mm High from top of coaming <b>(to suit 820-850 wide chassis rails)</b>
Side Opening:	2265mm
Front Wall:	75mm front wall meeting all load restraint requirements fitted with front tensioners.
Rear Frame:	Channel uprights reinforced with 50 x 50 SHS for added strength with dock rubbers and underrun bar.
Roof Frame:	RHS roof frame with 30 x 30 SHS roof bows and aluminium curtain tracks.
Floor Frame:	100 x 50 channel main runners with 75 x 50 RHS cross bearers.
Flooring:	<b>5mm</b> chequered plate floor.
Side Coaming:	100 x 45 RSJ with 20mm lip.
Rope Rails:	25mm NB pipe.
Steps:	Front & rear steps on each side.
Rear Doors:	Double FRP rear doors, single camlock, and three (3) hinges on each door.
Guards:	Steel mudguards & mudflaps.
Lights:	Three (3) side marker lights on each side, front & rear clearance lights.
Curtains:	Easy glide roller Blue 543 curtains with black pelmet.
Gates:	Three (3) 1500H lightweight duragal steel gates on each side

Price:

Optional Extras (pricing on request):

- Load rated curtains
- Reverse camera
- Aluminium gates
- Gate restraint system
- Nose cone
- Tool box
- Load binders
- Work light
- Alternative curtain colour:



245 FRANKSTON-DANDENONG ROAD, DANDENONG, 3175  
TEL: 03 97912144



TENSIONERS



NARVA LED LIGHTS



NARVA LED NUMBER  
PLATE LIGHTS



NOSE CONE



LOAD BINDERS



GATES RESTRAINT SYSTEM



CURTAIN TRACK



TOOLBOX